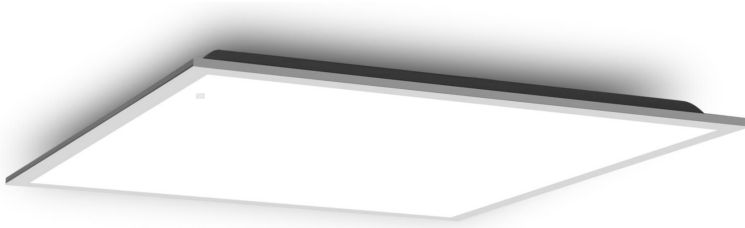


# LED PANEL LIGHT BACKLIT



MODEL # OPT BL ( BACKLIT PANEL LIGHT)



120 Lm  
Watt

100-277  
Volt

50000  
Hrs.

IP  
40

## PANEL LIGHT FEATURES

Save up to 70% in energy consumption.

IP40 Ingress Protection

Universal Voltage 100-277 AC

High Lumen efficiency

120 Lumen/Watt

Uniform light effect with PMMA optic lens

Installation: Recessed, Suspended and Surface Mounted

50000 hours long life time.

Total Harmonic Distortion: <15%

Color Temperature: 3000K 4000K 5000K 6500K.

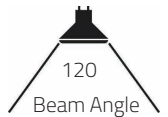
Driver Input Voltage: 100-277, THD<15, EMC Surge Protection 3750V

Integrated iron plate design provides excellent thermal management

Consise design offers high cost performance

UGR <19

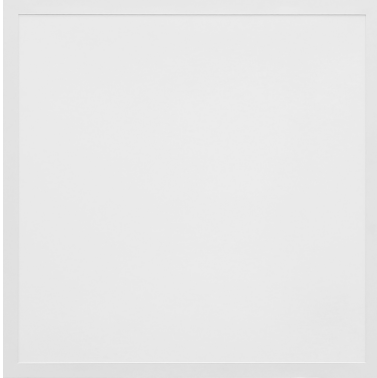
Watt	40, 45, 64
Lumen	110-120 LM/WATT
THD	<15%
Voltage	100-277 VOLT AC
Life Hours	50,000
POWER FACTOR	>0.9
Color Temperature	3000K 4000K 6500K
IP Rating	40



CB CE IECEE SASO NO FLICKER 50000 Hrs. 120° PF>0.9 UGR<19 IP40 100-277V



FRONT VIEW



BACK VIEW



	LED 600X600	LED 300X1200	LED 600X1200
BRAND	OPTIMAL LIGHT	OPTIMAL LIGHT	OPTIMAL LIGHT
MODEL NUMBER	OPT -BL6060-40	OPT -BL3012-45	OPT -BL6012-64
WATTAGE	40 WATT	45 WATT	64 WATT
LUMEN	4400 LM	5000 LM	7400 LM
EFFICIENCY	110 LM/W	110 LM/W	115LM/W
DIMENSIONS	595 X 595 X 30MM	295 X 1195 X 30MM	595 X 1195 X 30MM
LED CHIPS	HIGH QUALITY SMD2835	HIGH QUALITY SMD2835	HIGH QUALITY SMD2835
CCT	3000K / 4000K / 6500K	3000K / 4000K / 6500K	3000K / 4000K / 6500K
CRI	>80	>80	>80
INPUT VOLTAGE	100-277 V AC	100-277 V AC	100-277 V AC
FREQUENCY	50/60 Hz	50/60 Hz	50/60 Hz
BEAM ANGLE	120	120	120
FLICKERING	NO FLICKERING	NO FLICKERING	NO FLICKERING
POWER FACTOR	>0.9	>0.9	>0.9
DISPLACEMENT FACTOR	0.5	0.5	0.5
THD	<15%	<15%	<15%
SURGE PROTECTION	3750V	3750V	3750V
LIFE SWITCHES TIMES	15000	15000	15000
WORKING TEMPERATURE	-20 - +40	-20 - +40	-20 - +40
LIFE TIME	50,000 Hours	50,000 Hours	50,000 Hours
INGRESS PROTECTION	40 / 65 ( Optional)	40 / 65 ( Optional)	40 / 65 ( Optional)
WARRANTY	FIVE YEARS	FIVE YEARS	FIVE YEARS



High Quality Led  
Pmma Optic Lens

100-277 Volt  
50/60 Hz

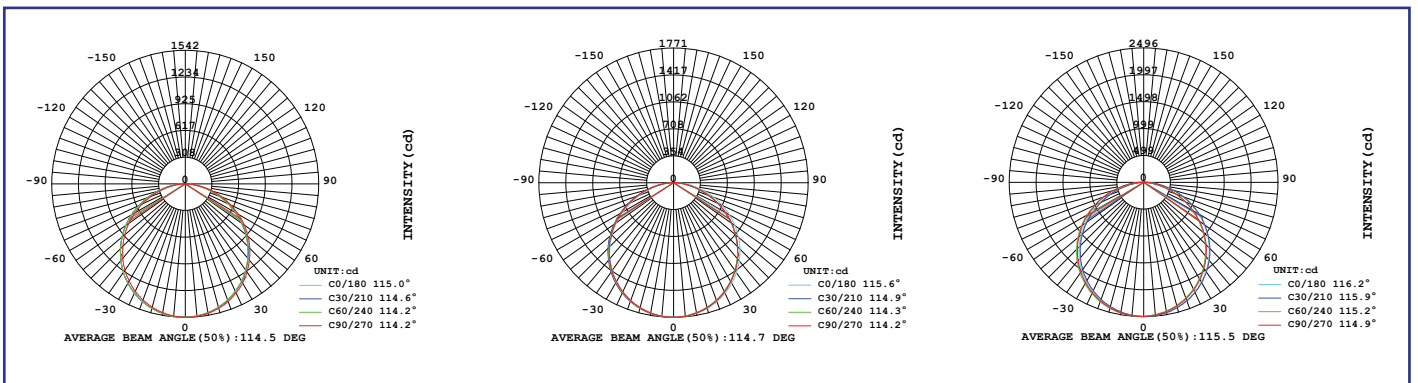
Housing

## LUMINOUS INTENSITY DISTRIBUTION

600 x 600 40W

300 x 1200 45W

600 x 1200 64W

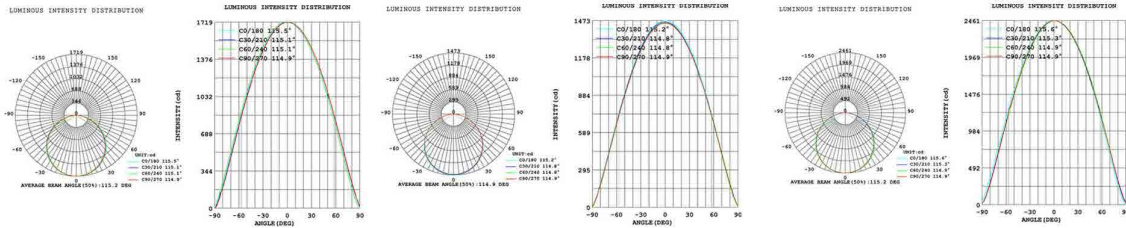


## PRODUCT DIMENSION





## Light distribution method:



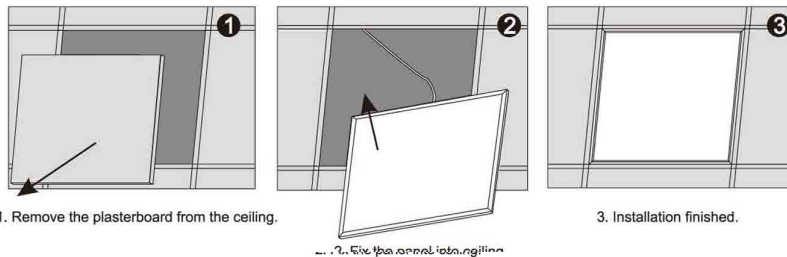
## Installation Method :

\*\*\*Cut off power before installation.

Warning: The lamp is not suitable for mounting on tubular material

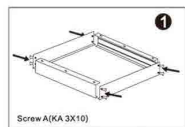
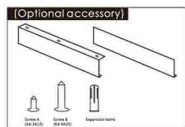
### Recession

Product size	Cut-out hole
595x595x30mm	575x575mm
295x1195x30mm	275x1175mm
595x1195x30mm	575x1175mm



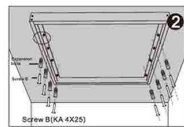
### Surfaced mounted

#### • Surfaced Mounted Frame

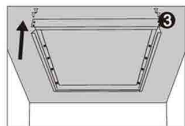


1. Assemble the 4 frames with screw A to a whole square

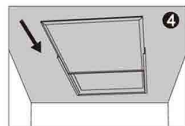
#### OPT-BL-SMF01



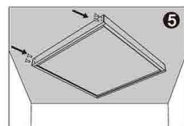
2. Fix the square frames to the ceiling with Screw B.



3. Demount one frame



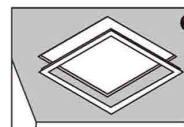
4. Put the panel into the frame square.



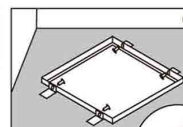
5. Fix the last frame with screw A.

#### • Recessed Frame

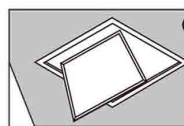
#### OPT-BL-RMF01



1. Put the frame into the hole



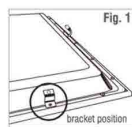
2. Fix the frame on the hole



3. put the panel in to the recessed mounted frame.

### Suspension kit

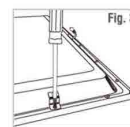
#### • Suspension kit OPT-BL-SK01



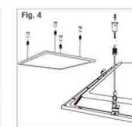
1. Unscrew the screw fixed on the panel light (See Fig. 2), then secured the bracket into the threaded hole using the supplied short screw (See Fig. 3).



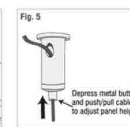
2. Use one end of the suspension wire with a metal hook to buckle into the bracket hole, do the same for other 3 suspension wires. (See Fig. 4)



3. Mark and drill the fixing hole in the ceiling, the fixing hole position on the ceiling must same as the 4 suspension wire space have been fixed on the light to keep the light hangs level.

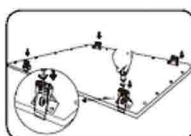


4. Refer to Fig. 5. To adjust the height of the panel, depress the metal button and simply push/pull the wire through the hole in the side of the panel adjustment barrels. Ensure the panel hangs level.

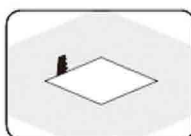


### Spring clips

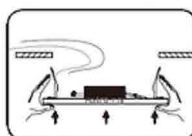
#### • Spring clips



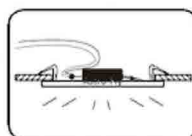
1. remove original screws, enclosed longer screws to assemble springs.



2. open a hole on the ceiling with the size  
1.590x560  
2.290x1170  
3.590x1170



3. one side of springs into the ceiling



4. another side of springs into the ceiling ,Total installation will be finished

Mounting Accessories: Surface Mounted Box, Pendant Mounted, Recessed Mounted etc.