

LED EXIT SIGN- OPT EXN1

أوبتيمال لايت
Optimal Light



OPTIMAL LIGHT *Professional*

EMERGENCY EXIT SIGN



EXIT LEGENDS

TEXT ARABIC & / ENGLISH

RUNNING MAN

ARROW - LEFT/ RIGHT/ DOWN

GREEN /RED COLOR

CUSTOMIZATION

CODE: OPT EXN1



CODE: OPT ELN1 IP65



CODE: OPT EXN1 IP40



MOUNTING : CEILING / RECESSED / PENDANT / WALL TYPE / WALL DOUBLE SIDE



Different Exit Sign Legend Options Available
Differetn Mounting Accessories Available



► Advantages:

- Simple and Modern Blade Design
- 3 Hour Emergency Illumination
- Overcharge & Over-discharge protection
- Universal Mounting Methods available:
 - Celling Mounting
 - Wall/Side Mounting(Accessories optional)
 - Hang Mounting(Accessories optional)
- Automatic test function
- Different EXIT sign legend options available
- IP40



► Applications:

- Hotel
- Hospital
- Office building
- Hallways
- The mall
- Meeting room
- Movie Theater
- The lobby



► Technical Characteristics:

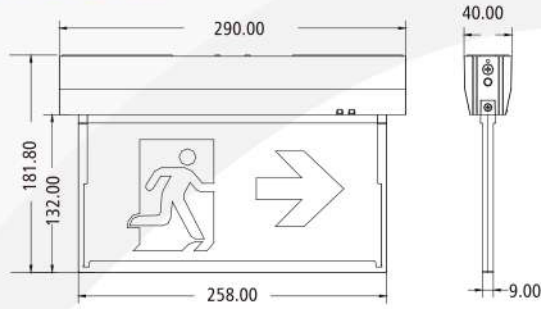
Brand:	Optimal Light
Model:	OPT-EXN1
Mains voltage:	220-240VAC 50/60Hz
Rated power :	8W
Power factor :	0.45
Battery(LiFePO4):	3.2V/3Ah
Battery Life :	Up to 4 years
Battery protection :	Overcharging and deep discharging protection
Recharging time :	24h
Minimum emergency duration:	3h
Produced in accordance with :	IEC 60598-1 IEC 60598-2-22
Operation temperature range :	ta:40 °C
Viewing distance :	32m
IP Rating:	IP40
Lifetime:	30,000 Hrs.
Warranty:	3 years



► Materials:

Housing	PC
Housing color	Green

► Product Dimension:



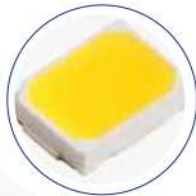
► Unique Features:



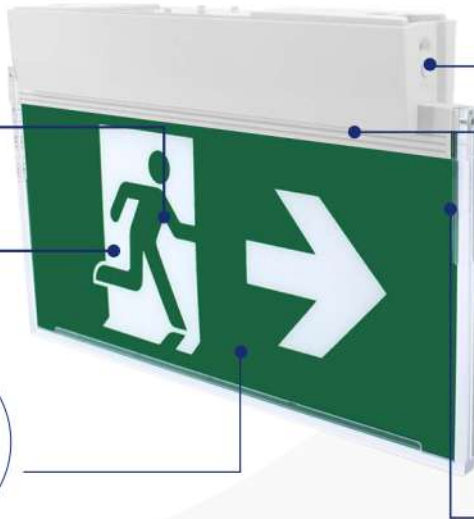
Replaceable stickers



Long lasting LEDs



32pcs SMD 2835



Test button



charging indicator and failure indicator

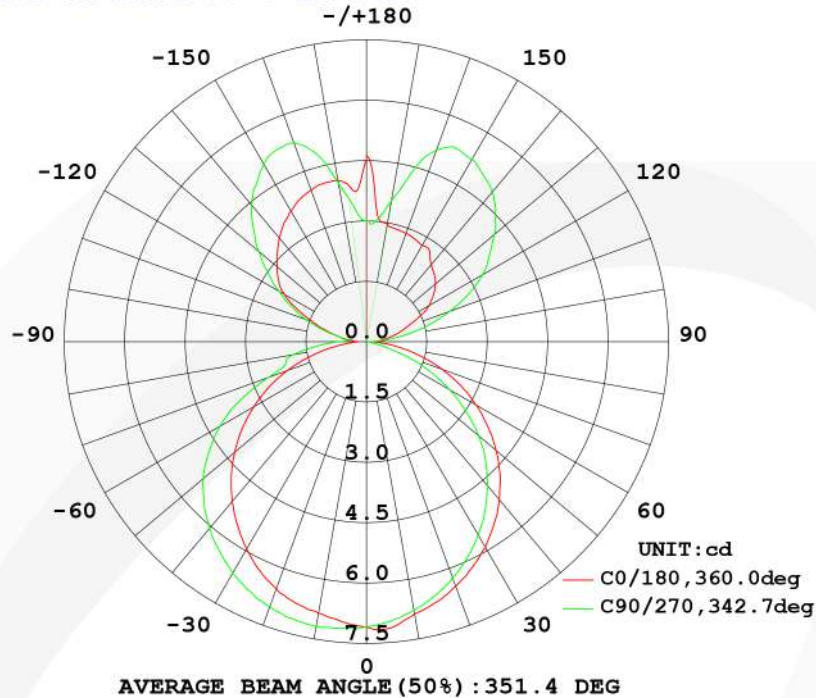


Simple and modern blade design

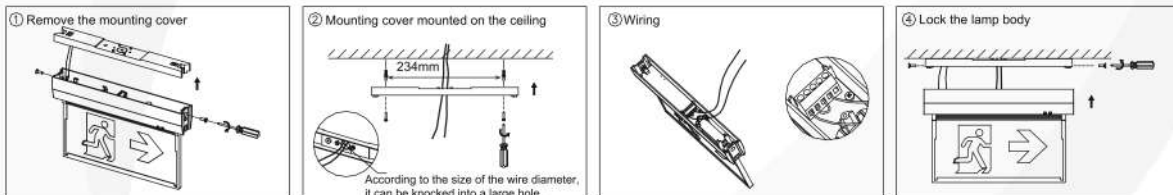
► Three installation methods:



► Light Distribution Curve:



► Installation:



► Size And Packing:

Power range	Product size(mm)	Packing size(mm)	N.W(Kg)	G.W(Kg)
8W	290x40x182	341x44x226	1	1.8

► Notice For User:

Please turn off power before install or change assembly parts.
The input voltage and lamps should be matched, after connecting the power line,
Please make sure the wiring section is insulated.
No-professionals must not install and disassemble the lamps.

► Trouble Shootings:

Troubles	Check points
Flickering of the light	If same phenomena occur, then call agencies Turn off the power and turn on again in 3 minutes
Out of working	Please check the connection If same phenomena occur, then call agencies